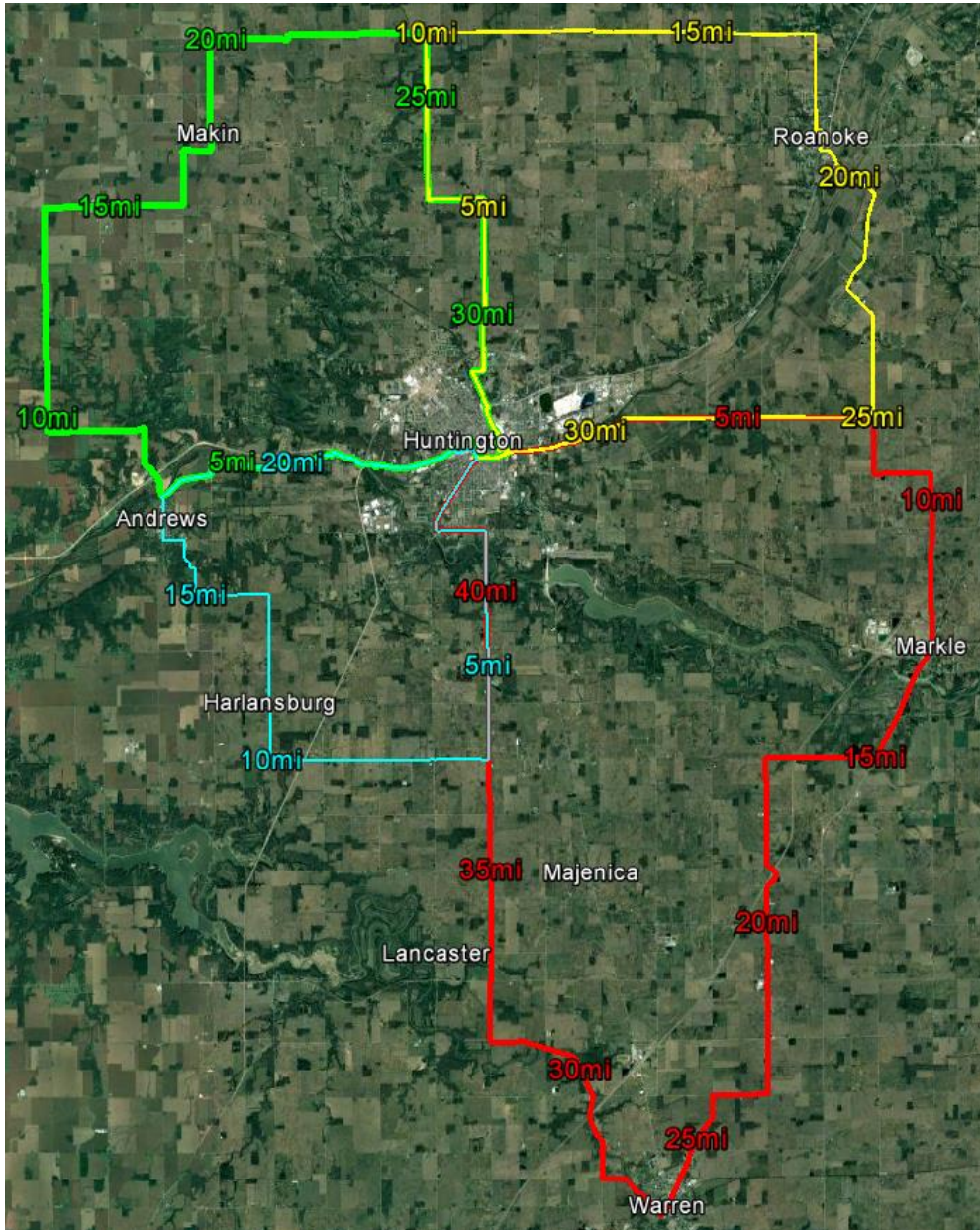
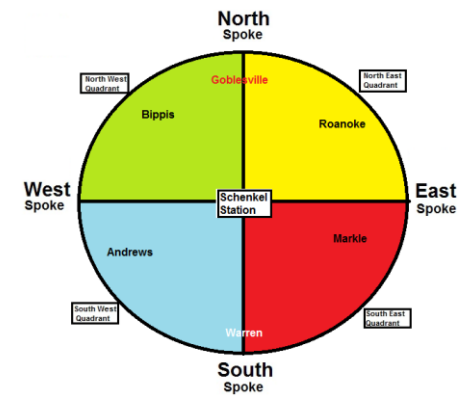


Huntington County Trail System V02

All Routes Start and End from City/County Trail Heads



The Huntington County trail system is a "Spoke and Wheel" design with Four Spokes and Four Quadrants



Each quadrant can be followed Clockwise or Counter-Clockwise.

Each quadrant can be ridden individually or in combination with other quadrants.

Four Quadrants	Miles	Google Maps Link
North West (Green)	33	Huntington County - North West
North East (Yellow)	33	Huntington County - North East
South West (Blue)	23	Huntington County - South West
South East (Red)	43	Huntington County - South East

Four Spokes	County Trailheads Connected to City Urban Trails
North (Green & Yellow)	Erie Rail Trail (YMCA Parking Lot)
South (Blue & Red)	South Etna Trail Intersection of South Etna and Waterworks Road
East (Red & Yellow)	Erie Heritage Park
West (Green & Blue)	Lime City Trail (Parking Lot)