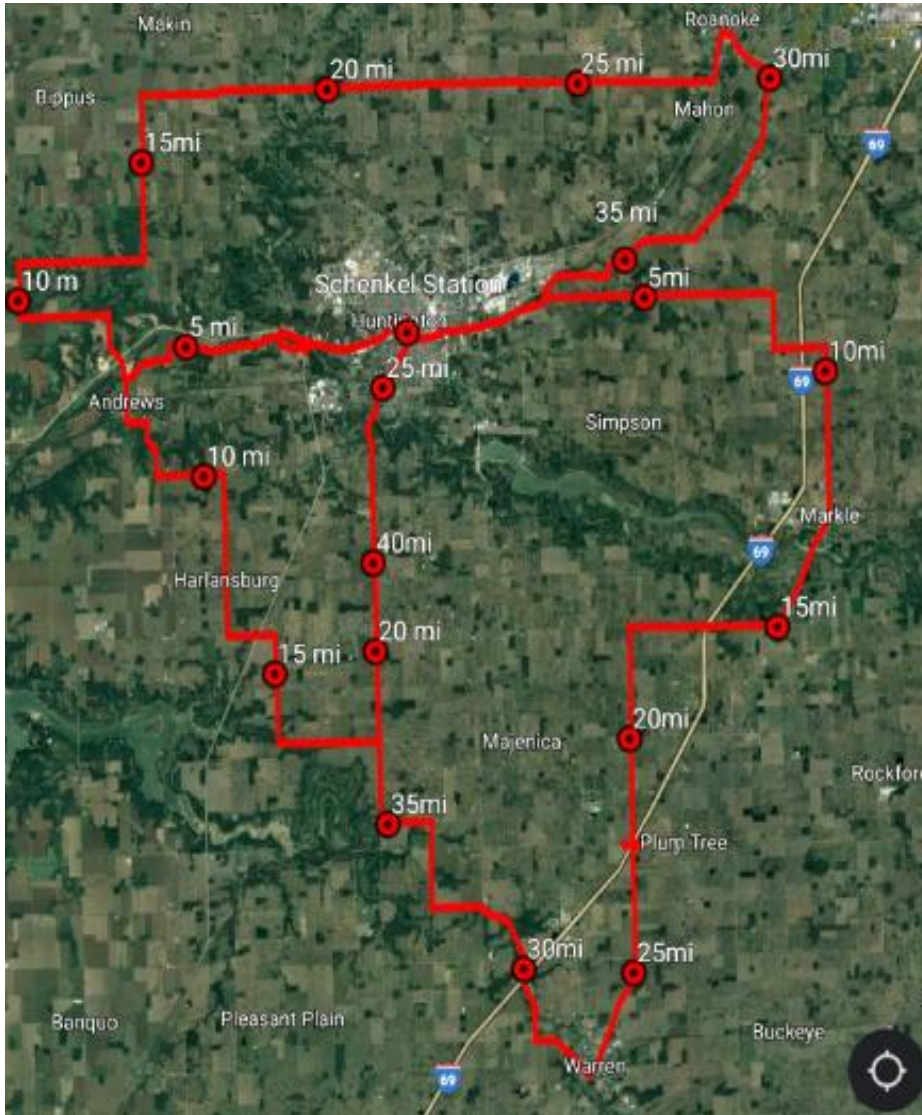


Huntington County Trail System - 2021

All Routes Start and End at the **Historic Schenkel Train Station (HARTA Headquarters)**



The Huntington County trail system has three main routes:

- 1- North
- 2- South East
- 3- South West

Each route can be followed in a Clockwise or a Counter-Clockwise direction.

Each route can be ridden individually or in combination with other routes.

There are a total of **14 different route options in this trail system.**

	Route Name	Miles (Approximate)
Individual Routes	1 North - Clockwise	40
	2 North - Counter-Clockwise	40
	3 South West - Clockwise	26
	4 South West - Counter-Clockwise	26
	5 South East - Clockwise	46
	6 South East - Counter-Clockwise	46
Combination Routes	7 North & South East - Clockwise	75
	8 North & South East - Counter-Clockwise	75
	9 North & South West - Clockwise	66
	10 North & South West - Counter-Clockwise	66
	11 South East and South West - Counter-Clockwise (South Half of County)	60
	12 South East and South West - Clockwise (South Half of County)	60
	13 Full Loop - Clockwise	80
	14 Full Loop - Counter-Clockwise	80

How to get to the first County sign

There are **two "spokes"** on this trail system and two **individual routes** (no spoke)

1st County Sign	Directions from Schenkel Station to the 1st County Sign
<p>Spoke-1: (West Spoke) The first county sign for this spoke is at the bridge on State Road 9 and River Road.</p> <p>This spoke takes you to a 'T' intersection in Andrews at River Road and Main street. When you get to the 'T' you have two route choices. 1- Turn left (South) to ride the South West route in a counter-clockwise direction. 2- Turn right (North) to ride the North route in a clockwise direction.</p>	<p>Head East on Court Street past the court house then turn left (North) onto Warren Street and go to East Park Drive and turn left (West) onto East Park Drive.</p> <p>East Park Drive turns into West Park Drive.</p> <p>Take West Park Drive about 2 miles to State Road 9 (Dual Lane) and turn left (South) onto SR9. Cross the bridge and the 1st County sign will be just across the bridge on the right. It says 'To Andrews'.</p>
<p>Spoke-2: (South Spoke) The first county sign for this spoke is at the intersection of South Jefferson street and 300 West.</p> <p>You turn left (South) onto 300 West and follow it until you get to 400 South. When you get to the intersection of 300 West and 400 South you have two route choices. 1- Go straight to ride the South East route in a counter-clockwise direction. 2- Turn right (West) to ride the South West route in clockwise direction.</p>	<p>Head East on Court Street to South Jefferson then turn right (South) onto South Jefferson and go to stop light at South Etna and turn Right (South) onto South Etna.</p> <p>Take South Etna about 2 miles until you cross the river then go about ¼ mile until you get to 300W and you will see the 1st county sign that says "To Andrews".</p>
<p>North route counter-clockwise The first county sign for this route is at the intersection of Riverside Drive and 400 North.</p> <p>You continue straight (East) on Riverside Drive which turns into 500 North when you exit city limits.</p>	<p>Head East on Court Street to South Jefferson then turn right (South) onto South Jefferson and go to stop light and turn left (East) onto Riverside Drive.</p> <p>Follow Riverside drive about 2 miles to 400N which is where you will see the 1st county sign that says 'To Roanoke.</p>
<p>South-East route clockwise The first county sign for this route is at the intersection of East Taylor street and Broadway street.</p> <p>You continue straight (East) on East Taylor street which turns into 300 North when you exit city limits.</p>	<p>Head East on Court Street to stop-light then turn right (South) onto South Jefferson and go to stop light and turn left (East) onto Riverside Drive.</p> <p>Follow Riverside drive for about ½ mile to Sherman Street and turn right (South) onto Sherman street.</p> <p>Follow Sherman street for 3/10th mile and turn left on East Taylor street. Follow East Taylor street for 1/2 mile to Broadway street which is where you will see the 1st county sign that says 'To Markle'.</p>